

## 2.28 Winkel 90°

### Produktinformationen

#### Eigenschaften

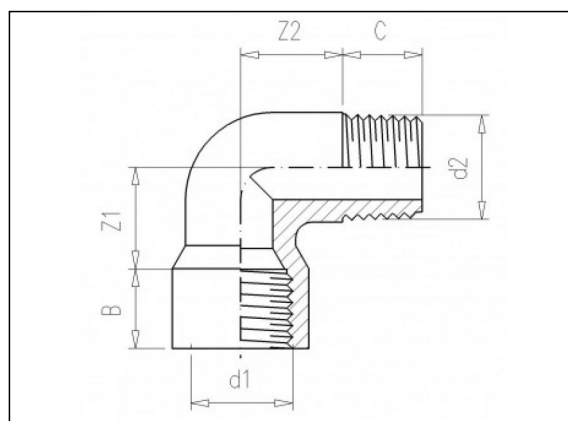
- Rohr Aussengewinde
- Rohr Innengewinde

#### Material

- PVC-U = Polyvinylchlorid ohne Weichmacher

#### Herstellung

- Spritzguss



### Verfügbare Artikel

| ART.CODE | d1          | d2          | Z1   | Z2   | B  | C  | PN | Verp |
|----------|-------------|-------------|------|------|----|----|----|------|
| 2.28.020 | 1/2"<br>(F) | 1/2"<br>(M) | 20.5 | 20.5 | 16 | 16 | 10 | 200  |
| 2.28.025 | 3/4"<br>(F) | 3/4"<br>(M) | 24.5 | 24.5 | 17 | 17 | 10 | 300  |
| 2.28.032 | 1" (F)      | 1" (M)      | 30   | 30   | 21 | 21 | 10 | 200  |

#### Van de Lande BV

Lissenveld 1 \ 4941 VK Raamsdonksveer \ The Netherlands \ t +31 (0)162 51 60 00 \ f +31 (0)162 52 14 17 \ sales@vandelande.com  
 Traderegister Tilburg: 18070844 \ IBAN: NL13 RABO 0143 0035 26 \ BIC: RABONL2U \ VAT: NL 8123.91.755.B01