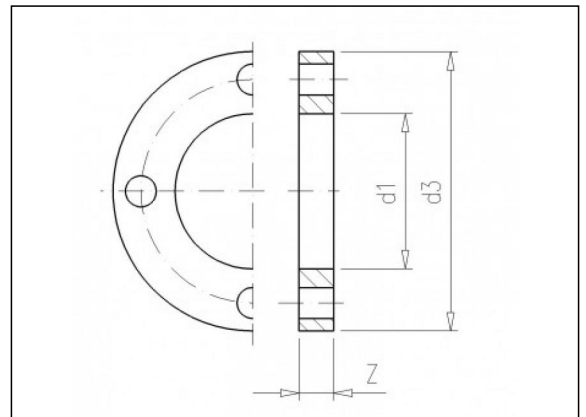


3.72 Flansch Aluminium

Produktinformationen

Material

- Aluminium



Verfügbare Artikel

| ART.CODE | Dia | DN | d1 | d2 | d3 | Z | Norm | Verp |
|-----------|-----|----|----|----|-----|----|-----------------------------|------|
| ALU972020 | 20 | 15 | 28 | 65 | 95 | 17 | ISO/D IN 2501 PN10 | 1 |
| ALU972025 | 25 | 20 | 34 | 75 | 105 | 17 | ISO/D IN 2501 PN10 | 1 |
| ALU972032 | 32 | 25 | 42 | 85 | 115 | 17 | ISO/D IN 2501 PN10 | 1 |

Van de Lande BV

Lissenveld 1 \ 4941 VK Raamsdonksveer \ The Netherlands \ t +31 (0)162 51 60 00 \ f +31 (0)162 52 14 17 \ sales@vandelande.com
 Traderegister Tilburg: 18070844 \ IBAN: NL13 RABO 0143 0035 26 \ BIC: RABONL2U \ VAT: NL 8123.91.755.B01

| ART.CODE | Dia | DN | d1 | d2 | d3 | Z | Norm | Verp |
|-----------|-----|-----|-----|-----|-----|----|-----------------------------|------|
| ALU972040 | 40 | 32 | 51 | 100 | 140 | 17 | ISO/D IN 2501 PN10 | 1 |
| ALU972125 | 125 | 125 | 150 | 190 | 235 | 22 | | 1 |
| ALU972140 | 140 | 125 | 167 | 210 | 240 | 22 | ISO/D IN 2501 PN10 | 1 |
| ALU972200 | 200 | 175 | 235 | 270 | 315 | 24 | ISO 2536 PN10 | 1 |
| ALU972225 | 225 | 200 | 251 | 295 | 340 | 24 | ISO/D IN 2501 PN10 | 1 |
| ALU972250 | 250 | 225 | 277 | 325 | 370 | 26 | ISO 2536 PN10 | 1 |
| ALU972315 | 315 | 300 | 348 | 400 | 445 | 26 | ISO/D IN 2501 PN10 | 1 |
| ALU972355 | 355 | 350 | 388 | 460 | 505 | 26 | ISO/D IN 2501 PN10 | 1 |
| ALU972400 | 400 | 400 | 442 | 515 | 565 | 32 | ISO/D IN 2501 PN10 | 1 |

Van de Lande BV

Lissenveld 1 \ 4941 VK Raamsdonksveer \ The Netherlands \ t +31 (0)162 51 60 00 \ f +31 (0)162 52 14 17 \ sales@vandelande.com
 Traderegister Tilburg: 18070844 \ IBAN: NL13 RABO 0143 0035 26 \ BIC: RABONL2U \ VAT: NL 8123.91.755.B01

www.vandelande.com

All our transactions are subject to the Van de Lande General Terms of Sale. A copy of these can be provided immediately upon your request.