

WIT524 Distanzhalter

Produktinformationen

Material

- PVC-U = Polyvinylchlorid ohne Weichmacher

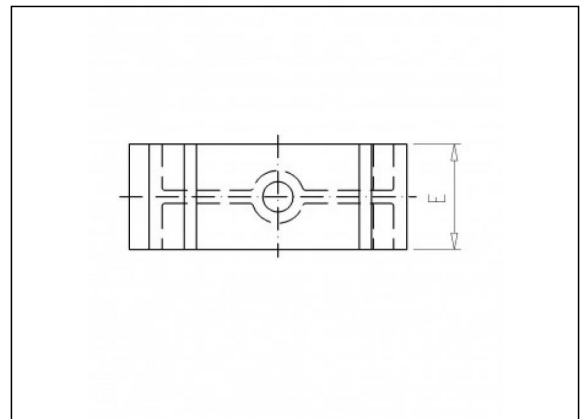
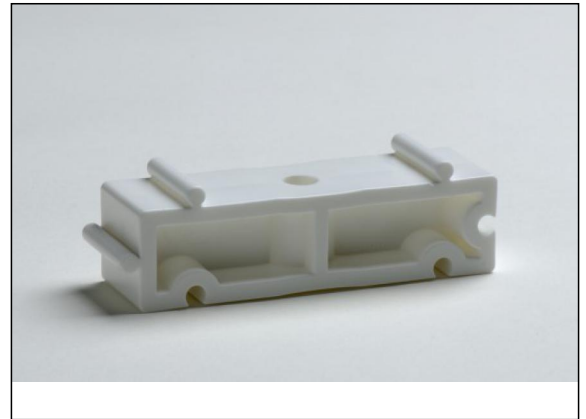
Herstellung

- Spritzguss

Zubehör



WIT525
Rohrklemme



Verfügbare Artikel

ART.CODE	Maat	d3	Z1	Z2	H	C	E	Verp
WIT524016	16	5.5	14	16.5	20	10	16	400 (40x10)
WIT524020	20	5.5	16.5	19	20	10	16	400 (40x10)
WIT524025	25	5.5	19	21.5	20	10	16	800 (80x10)

Van de Lande BV

Lissenveld 1 \ 4941 VK Raamsdonksveer \ The Netherlands \ t +31 (0)162 51 60 00 \ f +31 (0)162 52 14 17 \ sales@vandelande.com
Traderegister Tilburg: 18070844 \ IBAN: NL13 RABO 0143 0035 26 \ BIC: RABONL2U \ VAT: NL 8123.91.755.B01

All our transactions are subject to the Van de Lande General Terms of Sale. A copy of these can be provided immediately upon your request.

ART.CODE	Maat	d3	Z1	Z2	H	C	E	Verp
WIT524032	32	5.5	24	26.5	20	10	16	600 (60x10)
WIT524040	40	6.5	33.5	33.5	20	10	22	250 (25x10)
WIT524050	50	6.5	37	37	20	10	22	250 (25x10)
WIT524063	63	8.5	44.5	44.5	20	10	25	150 (15x10)
WIT524075	75	8.5	52	52	20	10	25	80 (8x10)
WIT524090	90	8.5	64.5	64.5	20	10	28	100 (10x10)

Van de Lande BV

Lissenveld 1 \ 4941 VK Raamsdonksveer \ The Netherlands \ t +31 (0)162 51 60 00 \ f +31 (0)162 52 14 17 \ sales@vandelande.com
Traderegister Tilburg: 18070844 \ IBAN: NL13 RABO 0143 0035 26 \ BIC: RABONL2U \ VAT: NL 8123.91.755.B01

All our transactions are subject to the Van de Lande General Terms of Sale. A copy of these can be provided immediately upon your request.