

# 6.31 PE connector ball valve (option)

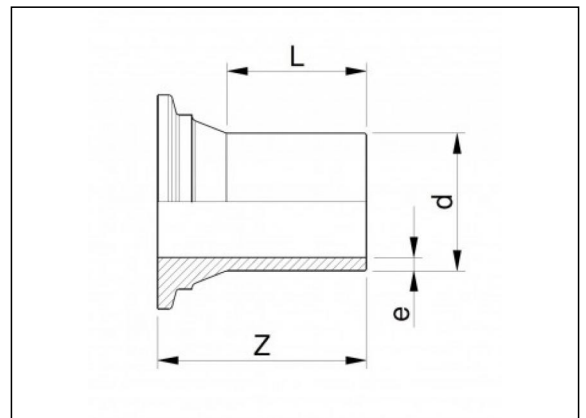
## Product information

**Material**

- PE100

**Manufacture**

- Injection moulded



## Available items

ART.CODE	d	Z	L	e	SDR	P (Bar)	Verp
6.31.020	20	67	45	2.0	11	12.5	25
6.31.025	25	68	45	2.3	11	12.5	25
6.31.032	32	71	45	3	11	12.5	25
6.31.040	40	80	50	3.7	11	12.5	15
6.31.050	50	89	57	4.6	11	12.5	10
6.31.063	63	105	70	5.8	11	12.5	5
6.31.064	63	105	70	3.8	17	7.5	5

**Van de Lande BV**

Lissenveld 1 \ 4941 VK Raamsdonksveer \ The Netherlands \ t +31 (0)162 51 60 00 \ f +31 (0)162 52 14 17 \ sales@vandelande.com  
 Traderegister Tilburg: 18070844 \ IBAN: NL13 RABO 0143 0035 26 \ BIC: RABONL2U \ VAT: NL 8123.91.755.B01

ART.CODE	d	Z	L	e	SDR	P (Bar)	Verp
6.31.075	75	123	81	6.8	11	7.5	5
6.31.076	75	123	81	4.5	17	7.5	5
6.31.090	90	137	90	8.2	11	7.5	3
6.31.091	90	137	90	5.4	17	7.5	3

**Van de Lande BV**

Lissenveld 1 \ 4941 VK Raamsdonksveer \ The Netherlands \ t +31 (0)162 51 60 00 \ f +31 (0)162 52 14 17 \ sales@vandelande.com  
Traderegister Tilburg: 18070844 \ IBAN: NL13 RABO 0143 0035 26 \ BIC: RABONL2U \ VAT: NL 8123.91.755.B01

All our transactions are subject to the Van de Lande General Terms of Sale. A copy of these can be provided immediately upon your request.