

# 9.72 PP-V Flange

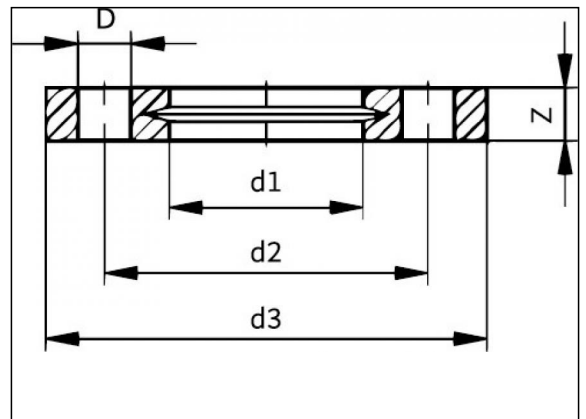
## Product information

### Material

- PP-GF = Polypropyleen glasfiber reinforced (30%)

### Manufacture

- Injection moulded



## Available items

ART.CODE	Dia	DN	d1	d2	d3	Z	NxD	PN	Qty
9.72.020	20	15	28	65	95	16	4x14	16	50
9.72.025	25	20	34	75	105	17	4x14	16	50
9.72.032	32	25	42	85	115	18	4x14	16	50
9.72.040	40	32	51	100	140	20	4x18	16	30
9.72.050	50	40	62	110	150	22	4x18	16	30
9.72.063	63	50	78	125	165	24	4x18	16	50
9.72.075	75	65	92	145	185	26	4x18	16	30
9.72.090	90	80	110	160	200	27	8x18	16	25

### Van de Lande BV

Lissenveld 1 \ 4941 VK Raamsdonksveer \ The Netherlands \ t +31 (0)162 51 60 00 \ f +31 (0)162 52 14 17 \ sales@vandelande.com  
 Traderegister Tilburg: 18070844 \ IBAN: NL13 RABO 0143 0035 26 \ BIC: RABONL2U \ VAT: NL 8123.91.755.B01

ART.CODE	Dia	DN	d1	d2	d3	Z	NxD	PN	Qty
9.72.110	110	100	133	180	220	28	8x18	16	15
9.72.140	140	125	167	210	250	30	8x18	16	15
9.72.160	160	150	190	241	285	32	8x22	16	10
9.72.200	200	200	226	297	340	34	8x23	16	5
9.72.225	225	200	250	297	340	34	8x23	16	5
9.72.250	250	250	277	350	395	38	12x2 2	10	5
9.72.280	280	250	310	350	395	38	12x2 2	10	1
9.72.315	315	300	348	400	445	42	12x2 2	10	1
9.72.355	355	350	388	460	515	46	16x2 3	10	1
9.72.400	400	400	442	515	574	50	16x2 6	10	1

**Van de Lande BV**

Lissenveld 1 \ 4941 VK Raamsdonksveer \ The Netherlands \ t +31 (0)162 51 60 00 \ f +31 (0)162 52 14 17 \ sales@vandelande.com  
 Traderegister Tilburg: 18070844 \ IBAN: NL13 RABO 0143 0035 26 \ BIC: RABONL2U \ VAT: NL 8123.91.755.B01

[www.vandelande.com](http://www.vandelande.com)

All our transactions are subject to the Van de Lande General Terms of Sale. A copy of these can be provided immediately upon your request.