

WIT524 Block Filling

Product information

Material

- PVC-U = Unplasticised Polyvinylchloride

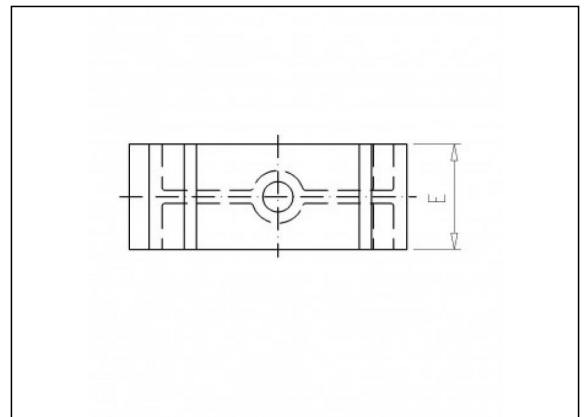
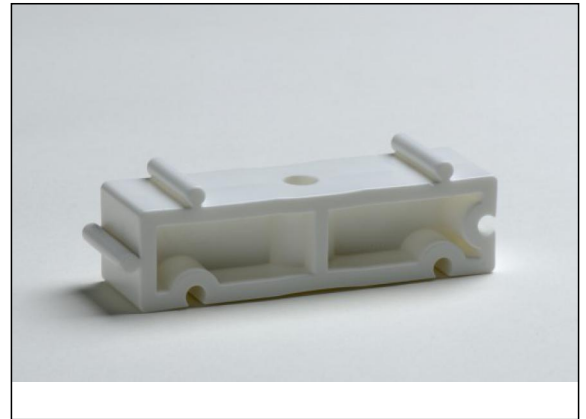
Manufacture

- Injection moulded

Parts



WIT525 Tube clip



Available items

ART.CODE	Maat	d3	Z1	Z2	H	C	E	Verp
WIT524016	16	5.5	14	16.5	20	10	16	400 (40x10)
WIT524020	20	5.5	16.5	19	20	10	16	400 (40x10)
WIT524025	25	5.5	19	21.5	20	10	16	800 (80x10)

Van de Lande BV

Lissenveld 1 \ 4941 VK Raamsdonksveer \ The Netherlands \ t +31 (0)162 51 60 00 \ f +31 (0)162 52 14 17 \ sales@vandelande.com
 Traderegister Tilburg: 18070844 \ IBAN: NL13 RABO 0143 0035 26 \ BIC: RABONL2U \ VAT: NL 8123.91.755.B01

ART.CODE	Maat	d3	Z1	Z2	H	C	E	Verp
WIT524032	32	5.5	24	26.5	20	10	16	600 (60x10)
WIT524040	40	6.5	33.5	33.5	20	10	22	250 (25x10)
WIT524050	50	6.5	37	37	20	10	22	250 (25x10)
WIT524063	63	8.5	44.5	44.5	20	10	25	150 (15x10)
WIT524075	75	8.5	52	52	20	10	25	80 (8x10)
WIT524090	90	8.5	64.5	64.5	20	10	28	100 (10x10)

Van de Lande BV

Lissenveld 1 \ 4941 VK Raamsdonksveer \ The Netherlands \ t +31 (0)162 51 60 00 \ f +31 (0)162 52 14 17 \ sales@vandelande.com
Traderegister Tilburg: 18070844 \ IBAN: NL13 RABO 0143 0035 26 \ BIC: RABONL2U \ VAT: NL 8123.91.755.B01

All our transactions are subject to the Van de Lande General Terms of Sale. A copy of these can be provided immediately upon your request.