

## 4.10 Tapa en PE

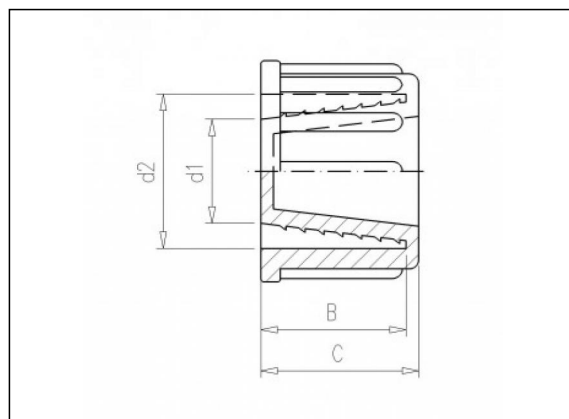
### Información del producto

**Material**

- PP = polipropileno

**Fabricación**

- Moldeado por inyección



### Artículos disponibles

| ART.CODE | d1 | d2 | B  | C  | Verp |
|----------|----|----|----|----|------|
| 4.10.016 | 10 | 16 | 17 | 20 | 500  |
| 4.10.020 | 12 | 20 | 18 | 21 | 500  |
| 4.10.025 | 17 | 25 | 21 | 24 | 250  |

**Van de Lande BV**

Lissenveld 1 \ 4941 VK Raamsdonksveer \ The Netherlands \ t +31 (0)162 51 60 00 \ f +31 (0)162 52 14 17 \ sales@vandelande.com  
Traderegister Tilburg: 18070844 \ IBAN: NL13 RABO 0143 0035 26 \ BIC: RABONL2U \ VAT: NL 8123.91.755.B01

All our transactions are subject to the Van de Lande General Terms of Sale. A copy of these can be provided immediately upon your request.