

WIT525 Abrazadera para tubos

Información del producto

Material

- PP = polipropileno

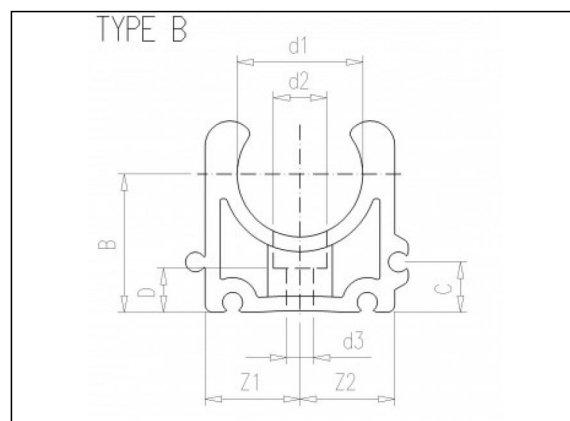
Fabricación

- Moldeado por inyección

Piezas



WIT524
Bloque de
llenado



Artículos disponibles

| ART.CODE | d1 | d2 | d3 | Z1 | Z2 | B | C | D | E | Type | Verp |
|-----------|----|------|-----|------|------|------|----|---|----|------|----------------|
| WIT525016 | 16 | 10.5 | 5.5 | 14 | 16.5 | 23 | 10 | 6 | 16 | B | 400 (40x10) |
| WIT525020 | 20 | 10.5 | 5.5 | 16.5 | 19 | 25 | 10 | 6 | 16 | B | 400 (40x10) |
| WIT525025 | 25 | 10.5 | 5.5 | 19 | 21.5 | 27.5 | 10 | 6 | 16 | B | 800 (80x10) |
| WIT525032 | 32 | 10.5 | 5.5 | 24 | 26.5 | 31 | 10 | 6 | 16 | B | 600 (60x10) |

Van de Lande BV

Lissenveld 1 \ 4941 VK Raamsdonksveer \ The Netherlands \ t +31 (0)162 51 60 00 \ f +31 (0)162 52 14 17 \ sales@vandelande.com
 Traderegister Tilburg: 18070844 \ IBAN: NL13 RABO 0143 0035 26 \ BIC: RABONL2U \ VAT: NL 8123.91.755.B01

| ART.CODE | d1 | d2 | d3 | Z1 | Z2 | B | C | D | E | Type | Verp |
|-----------|-----|----|-----|------|------|------|----|-----|----|------|----------------|
| WIT525040 | 40 | 14 | 6.5 | 33.5 | 33.5 | 35 | 10 | 6.5 | 22 | C | 250 (25x10) |
| WIT525050 | 50 | 14 | 6.5 | 37 | 37 | 40 | 10 | 6.5 | 22 | C | 250 (25x10) |
| WIT525063 | 63 | 17 | 8.5 | 44.5 | 44.5 | 51.5 | 10 | 10 | 25 | C | 150 (15x10) |
| WIT525075 | 75 | 17 | 8.5 | 52 | 52 | 57.5 | 10 | 10 | 25 | C | 80 (8x10) |
| WIT525090 | 90 | 17 | 8.5 | 64.5 | 64.5 | 65 | 10 | 10 | 28 | C | 60 (6x10) |
| WIT525110 | 110 | 17 | 8.5 | 78 | 78 | 75 | 10 | 10 | 28 | C | 50 (5X10) |

Van de Lande BV

Lissenveld 1 \ 4941 VK Raamsdonksveer \ The Netherlands \ t +31 (0)162 51 60 00 \ f +31 (0)162 52 14 17 \ sales@vandelande.com
Traderegister Tilburg: 18070844 \ IBAN: NL13 RABO 0143 0035 26 \ BIC: RABONL2U \ VAT: NL 8123.91.755.B01

www.vandelande.com

All our transactions are subject to the Van de Lande General Terms of Sale. A copy of these can be provided immediately upon your request.