

2.40 Codo 90°

Información del producto

Características

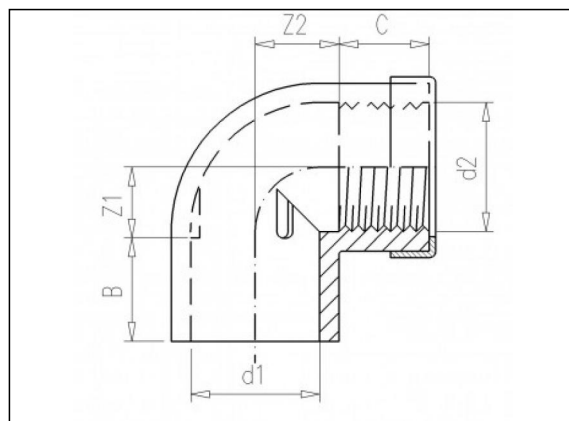
- Rosca hembra BSP
- Anillo de refuerzo INOX

Material

- PVC-U = cloruro de polivinilo sin plastificar

Fabricación

- Moldeado por inyección



Artículos disponibles

| ART.CODE | d1 | d2 | Z1 | Z2 | B | C | PN | Verp |
|----------|----|------------------|----|----|----|----|----|------|
| 2.40.016 | 16 | 3/8" (F) | 9 | 11 | 14 | 12 | 16 | 50 |
| 2.40.020 | 20 | 1/2" (F) | 11 | 11 | 16 | 16 | 16 | 50 |
| 2.40.025 | 25 | 3/4" (F) | 14 | 16 | 19 | 17 | 16 | 50 |
| 2.40.032 | 32 | 1" (F) | 17 | 18 | 22 | 21 | 16 | 50 |
| 2.40.040 | 40 | 1 1/4" (F) | 22 | 26 | 27 | 23 | 16 | 50 |

Van de Lande BV

Lissenveld 1 \ 4941 VK Raamsdonksveer \ The Netherlands \ t +31 (0)162 51 60 00 \ f +31 (0)162 52 14 17 \ sales@vandelande.com
 Traderegister Tilburg: 18070844 \ IBAN: NL13 RABO 0143 0035 26 \ BIC: RABONL2U \ VAT: NL 8123.91.755.B01

| ART.CODE | d1 | d2 | Z1 | Z2 | B | C | PN | Verp |
|----------|-----|------------------|----|----|----|----|----|------|
| 2.40.050 | 50 | 1 1/2" (F) | 28 | 36 | 31 | 23 | 16 | 50 |
| 2.40.063 | 63 | 2" (F) | 34 | 41 | 38 | 31 | 16 | 25 |
| 2.40.075 | 75 | 2 1/2" (F) | 39 | 47 | 44 | 36 | 10 | 30 |
| 2.40.090 | 90 | 3" (F) | 46 | 58 | 51 | 39 | 10 | 17 |
| 2.40.110 | 110 | 4" (F) | 56 | 78 | 61 | 39 | 10 | 12 |

Van de Lande BV

Lissenveld 1 \ 4941 VK Raamsdonksveer \ The Netherlands \ t +31 (0)162 51 60 00 \ f +31 (0)162 52 14 17 \ sales@vandelande.com
Traderegister Tilburg: 18070844 \ IBAN: NL13 RABO 0143 0035 26 \ BIC: RABONL2U \ VAT: NL 8123.91.755.B01

All our transactions are subject to the Van de Lande General Terms of Sale. A copy of these can be provided immediately upon your request.