

# 8.25 Portabrida

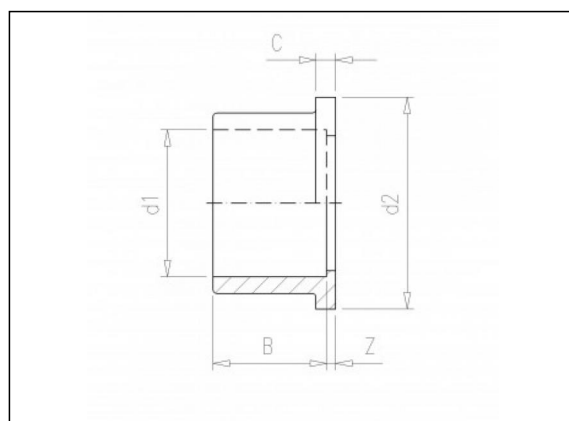
## Información del producto

### Material

- PVC-U = cloruro de polivinilo sin plastificar

### Fabricación

- Moldeado por inyección



## Artículos disponibles

ART.CODE	d1	d2	Z	B	C	Verp
8.25.010	10	5/8"	3	12	4	500
8.25.012	12	5/8"	3	12	4	500
8.25.016	16	3/4"	4	14	5	300
8.25.020	20	1"	4	16	5	200
8.25.025	25	1 1/4"	4	19	6	100
8.25.032	32	1 1/2"	4	22	6	50
8.25.040	40	2"	4	26	7	25

### Van de Lande BV

Lispenveld 1 \ 4941 VK Raamsdonksveer \ The Netherlands \ t +31 (0)162 51 60 00 \ f +31 (0)162 52 14 17 \ sales@vandelande.com  
 Traderegister Tilburg: 18070844 \ IBAN: NL13 RABO 0143 0035 26 \ BIC: RABONL2U \ VAT: NL 8123.91.755.B01

<b>ART.CODE</b>	<b>d1</b>	<b>d2</b>	<b>Z</b>	<b>B</b>	<b>C</b>	<b>Verp</b>
8.25.050	50	2 1/4"	4	31	7	25
8.25.063	63	2 3/4"	4	38	8	25
8.25.075	75	ZGTD	5	44	9	10
8.25.090	90	ZGTD	7	51	10	5
8.25.110	110	ZGTD	7	61	12	5

**Van de Lande BV**

Lispenveld 1 \ 4941 VK Raamsdonksveer \ The Netherlands \ t +31 (0)162 51 60 00 \ f +31 (0)162 52 14 17 \ sales@vandelande.com  
Traderegister Tilburg: 18070844 \ IBAN: NL13 RABO 0143 0035 26 \ BIC: RABONL2U \ VAT: NL 8123.91.755.B01

All our transactions are subject to the Van de Lande General Terms of Sale. A copy of these can be provided immediately upon your request.