

# 8.25 Portabride

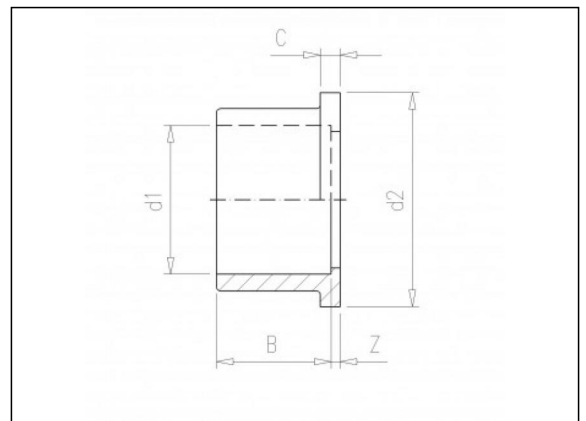
## Información del producto

### Material

- PVC-U = cloruro de polivinilo sin plastificar

### Fabricación

- Moldeado por inyección



## Artículos disponibles

ART.CODE	d1	d2	Z	B	C	Verp
8.25.021	1/2	1"	2.5	17	5	50
8.25.026	3/4	1 1/4"	2.5	20	6	50
8.25.033	1	1 1/2"	3	23	6	50
8.25.041	1 1/4	2"	3	28	7	25
8.25.051	1 1/2	2 1/4"	4	30	7	25
8.25.064	2	2 3/4"	4	36	8	25

### Van de Lande BV

Lissenveld 1 \ 4941 VK Raamsdonksveer \ The Netherlands \ t +31 (0)162 51 60 00 \ f +31 (0)162 52 14 17 \ sales@vandelande.com  
 Traderegister Tilburg: 18070844 \ IBAN: NL13 RABO 0143 0035 26 \ BIC: RABONL2U \ VAT: NL 8123.91.755.B01

<b>ART.CODE</b>	<b>d1</b>	<b>d2</b>	<b>Z</b>	<b>B</b>	<b>C</b>	<b>Verp</b>
8.25.075	2 1/2	ZGTD	5	44	9	10
8.25.091	3	ZGTD	5	51	10	5
8.25.111	4	ZGTD	4	64	12	5

**Van de Lande BV**

Lissenveld 1 \ 4941 VK Raamsdonksveer \ The Netherlands \ t +31 (0)162 51 60 00 \ f +31 (0)162 52 14 17 \ sales@vandelande.com  
Traderegister Tilburg: 18070844 \ IBAN: NL13 RABO 0143 0035 26 \ BIC: RABONL2U \ VAT: NL 8123.91.755.B01

All our transactions are subject to the Van de Lande General Terms of Sale. A copy of these can be provided immediately upon your request.