

# 7.34 Union PE

## Informations sur le produit

### Caractéristiques

- Filetage femelle BSP

### Matière

- PP = Polypropylène

### Joint

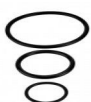
- EPDM

### Fabrication

- Moulé par injection



## Pièces



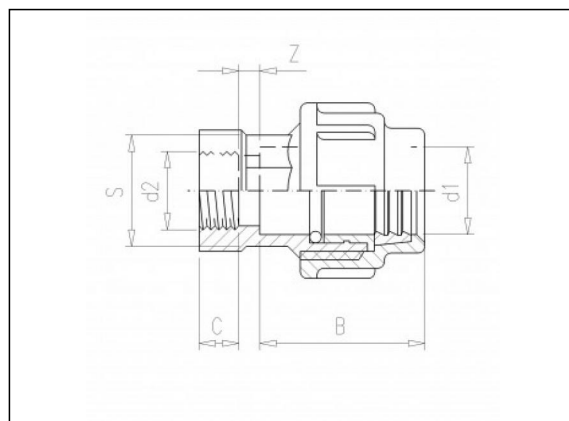
8.06 Joint torique



7.42 Écrou de raccord PE



7.44 Bague de compression



## Articles disponibles

| ART.CODE | d1 | d2          | Z | B  | C  | S  | PN | Verp |
|----------|----|-------------|---|----|----|----|----|------|
| 7.34.016 | 16 | 3/8"<br>(F) | 3 | 42 | 13 | 24 | 10 | 200  |
| 7.34.017 | 16 | 1/2"<br>(F) | 4 | 42 | 17 | 24 | 10 | 200  |
| 7.34.020 | 20 | 3/8"<br>(F) | 4 | 47 | 13 | 27 | 10 | 200  |
| 7.34.021 | 20 | 1/2"<br>(F) | 3 | 47 | 17 | 27 | 10 | 200  |
| 7.34.022 | 20 | 3/4"<br>(F) | 6 | 47 | 18 | 27 | 10 | 200  |

### Van de Lande BV

Lissenveld 1 \ 4941 VK Raamsdonksveer \ The Netherlands \ t +31 (0)162 51 60 00 \ f +31 (0)162 52 14 17 \ sales@vandelande.com  
 Traderegister Tilburg: 18070844 \ IBAN: NL13 RABO 0143 0035 26 \ BIC: RABONL2U \ VAT: NL 8123.91.755.B01

| ART.CODE | d1 | d2               | Z  | B  | C  | S  | PN | Verp |
|----------|----|------------------|----|----|----|----|----|------|
| 7.34.025 | 25 | 1/2"<br>(F)      | 4  | 51 | 16 | 33 | 10 | 200  |
| 7.34.026 | 25 | 3/4"<br>(F)      | 3  | 51 | 18 | 33 | 10 | 200  |
| 7.34.027 | 25 | 1" (F)           | 8  | 51 | 21 | 33 | 10 | 175  |
| 7.34.031 | 32 | 1/2"<br>(F)      | 4  | 57 | 17 | 42 | 10 | 175  |
| 7.34.032 | 32 | 3/4"<br>(F)      | 4  | 57 | 18 | 42 | 10 | 175  |
| 7.34.033 | 32 | 1" (F)           | 4  | 57 | 21 | 42 | 10 | 175  |
| 7.34.034 | 32 | 1<br>1/4"<br>(F) | 10 | 57 | 23 | 42 | 10 | 100  |
| 7.34.040 | 40 | 1" (F)           | 5  | 61 | 21 | 51 | 10 | 75   |
| 7.34.041 | 40 | 1<br>1/4"<br>(F) | 5  | 61 | 23 | 51 | 10 | 75   |
| 7.34.042 | 40 | 1<br>1/2"<br>(F) | 11 | 61 | 23 | 51 | 10 | 100  |

**Van de Lande BV**

Lissenveld 1 \ 4941 VK Raamsdonksveer \ The Netherlands \ t +31 (0)162 51 60 00 \ f +31 (0)162 52 14 17 \ sales@vandelande.com  
 Traderegister Tilburg: 18070844 \ IBAN: NL13 RABO 0143 0035 26 \ BIC: RABONL2U \ VAT: NL 8123.91.755.B01

[www.vandelande.com](http://www.vandelande.com)

All our transactions are subject to the Van de Lande General Terms of Sale. A copy of these can be provided immediately upon your request.