

## 3.15 Embout fileté

### Informations sur le produit

#### Caractéristiques

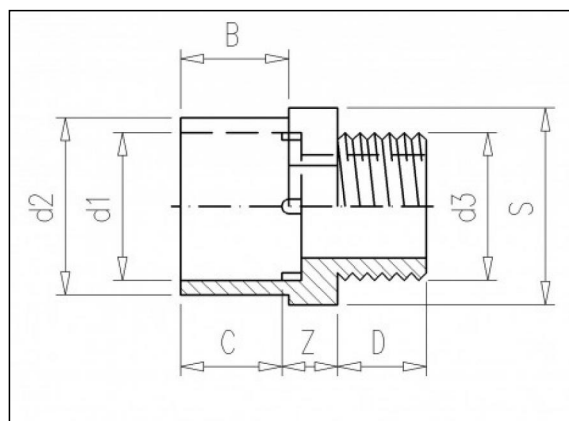
- Filetage mâle BSP

#### Matière

- PVC-U = Polychlorure de vinyle rigide

#### Fabrication

- Moulé par injection



### Articles disponibles

ART.CODE	d1	d2	d3	Z	B	C	D	S	PN	Verp
3.15.010	10	16	1/4" (M)	8	12	12	12	19	16	250
3.15.020	12	16	1/4" (M)	8	12	12	12	19	16	250
3.15.030	16	23*	1/4" (M)	6	12	14	12	27	16	250
3.15.035	16	23*	3/8" (M)	6	12	14	12	27	16	250
3.15.040	16	23*	1/2" (M)	6	12	14	16	27	16	250

#### Van de Lande BV

Lissenveld 1 \ 4941 VK Raamsdonksveer \ The Netherlands \ t +31 (0)162 51 60 00 \ f +31 (0)162 52 14 17 \ sales@vandelande.com  
 Traderegister Tilburg: 18070844 \ IBAN: NL13 RABO 0143 0035 26 \ BIC: RABONL2U \ VAT: NL 8123.91.755.B01

ART.CODE	d1	d2	d3	Z	B	C	D	S	PN	Verp
3.15.045	20	28*	3/8" (M)	6	14	16	12	32	16	250
3.15.050	20	28*	1/2" (M)	6	14	16	16	32	16	250
3.15.055	20	28*	3/4" (M)	6	14	16	17	32	16	250
3.15.060	25	32	1/2" (M)	8	19	19	16	36	16	300
3.15.065	25	32	3/4" (M)	6	19	19	19	36	16	300
3.15.070	25	32	1" (M)	9	19	19	20	36	16	300
3.15.075	32	40	1/2" (M)	10	22	22	16	46	16	250
3.15.080	32	40	3/4" (M)	10	22	22	17	46	16	300
3.15.085	32	40	1" (M)	10	22	22	21	46	16	300
3.15.090	32	40	1 1/4" (M)	10	22	22	23	46	16	300
3.15.092	40	50	1/2" (M)	11	26	26	16	55	16	225
3.15.093	40	50	3/4" (M)	11	26	26	17	55	16	225
3.15.095	40	50	1" (M)	11	26	26	21	55	16	225
3.15.100	40	50	1 1/4" (M)	11	26	26	23	55	16	200
3.15.105	40	50	1 1/2" (M)	11	26	26	23	55	16	175
3.15.110	50	63	1" (M)	12	31	31	21	65	16	150
3.15.115	50	63	1 1/4" (M)	12	31	31	23	65	16	150
3.15.120	50	63	1 1/2" (M)	12	31	31	23	65	16	150
3.15.125	50	63	2" (M)	14	31	31	25	65	16	150
3.15.130	63	75	1 1/4" (M)	19	44	38	23	80	16	80

**Van de Lande BV**

Lissenveld 1 \ 4941 VK Raamsdonksveer \ The Netherlands \ t +31 (0)162 51 60 00 \ f +31 (0)162 52 14 17 \ sales@vandelande.com  
 Traderegister Tilburg: 18070844 \ IBAN: NL13 RABO 0143 0035 26 \ BIC: RABONL2U \ VAT: NL 8123.91.755.B01

[www.vandelande.com](http://www.vandelande.com)

All our transactions are subject to the Van de Lande General Terms of Sale. A copy of these can be provided immediately upon your request.

ART.CODE	d1	d2	d3	Z	B	C	D	S	PN	Verp
3.15.135	63	75	1 1/2" (M)	19	44	38	23	80	16	80
3.15.140	63	75	2" (M)	19	44	38	27	80	16	80
3.15.145	63	75	2 1/2" (M)	19	44	38	31	80	16	90
3.15.150	75	90	2" (M)	26	51	44	26	95	16	48
3.15.155	75	90	2 1/2" (M)	27	51	44	30	95	16	48
3.15.160	75	90	3" (M)	28	51	44	33	95	16	48
3.15.165	90	110	2 1/2" (M)	31	61	51	31	115	16	27
3.15.170	90	110	3" (M)	31	61	51	33	115	16	27
3.15.175	90	110	4" (M)	31	61	51	40	115	16	27
3.15.180	110	132*	3" (M)	25	61	61	33	138	16	20
3.15.185	110	132*	4" (M)	25	61	61	40	138	16	18

**Van de Lande BV**

Lissenveld 1 \ 4941 VK Raamsdonksveer \ The Netherlands \ t +31 (0)162 51 60 00 \ f +31 (0)162 52 14 17 \ sales@vandelande.com  
 Traderegister Tilburg: 18070844 \ IBAN: NL13 RABO 0143 0035 26 \ BIC: RABONL2U \ VAT: NL 8123.91.755.B01

[www.vandelande.com](http://www.vandelande.com)

All our transactions are subject to the Van de Lande General Terms of Sale. A copy of these can be provided immediately upon your request.