

6.26 Collet à coller femelle

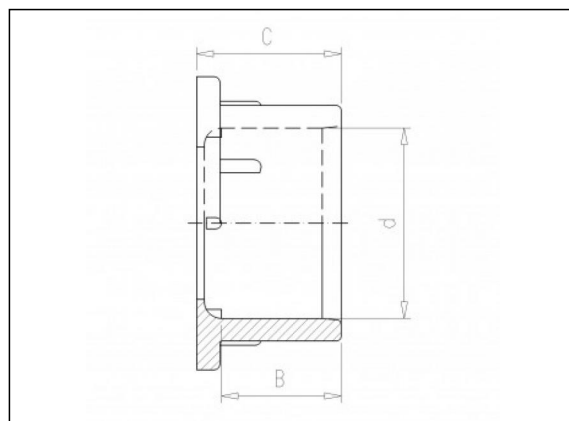
Informations sur le produit

Matière

- PVC-U = Polychlorure de vinyle rigide

Fabrication

- Moulé par injection



Articles disponibles

ART.CODE	d	B	C	DN	Verp
6.26.016	16	14	20.5	10	50
6.26.020	20	16	20.5	15	50
6.26.025	25	19	23.5	20	50
6.26.032	32	22	27.5	25	50
6.26.040	40	26	32	32	25
6.26.050	50	31	38	40	20
6.26.063	63	38	49	50	20
6.26.075	75	44	54.5	65	10
6.26.090	90	51	63	80	10

Van de Lande BV

Lissenveld 1 \ 4941 VK Raamsdonksveer \ The Netherlands \ t +31 (0)162 51 60 00 \ f +31 (0)162 52 14 17 \ sales@vandelande.com
Traderegister Tilburg: 18070844 \ IBAN: NL13 RABO 0143 0035 26 \ BIC: RABONL2U \ VAT: NL 8123.91.755.B01

ART.CODE	d	B	C	DN	Verp
6.26.110	110	61	76.5	100	10

Van de Lande BV

Lissenveld 1 \ 4941 VK Raamsdonksveer \ The Netherlands \ t +31 (0)162 51 60 00 \ f +31 (0)162 52 14 17 \ sales@vandelande.com
Traderegister Tilburg: 18070844 \ IBAN: NL13 RABO 0143 0035 26 \ BIC: RABONL2U \ VAT: NL 8123.91.755.B01

All our transactions are subject to the Van de Lande General Terms of Sale. A copy of these can be provided immediately upon your request.