

WIT524 Блок для насадки

Информация о продукции

Материал

- НПВХ (PVC-U) = непластифицированный поливинилхлорид

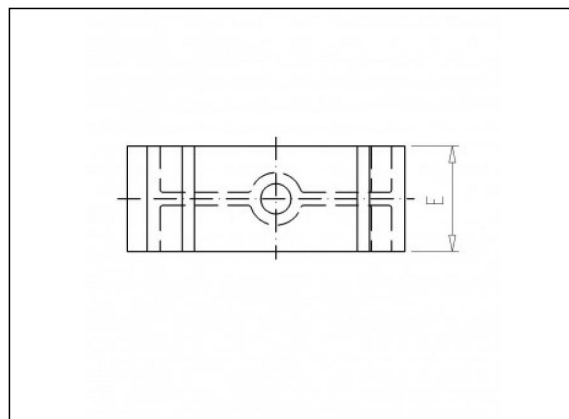
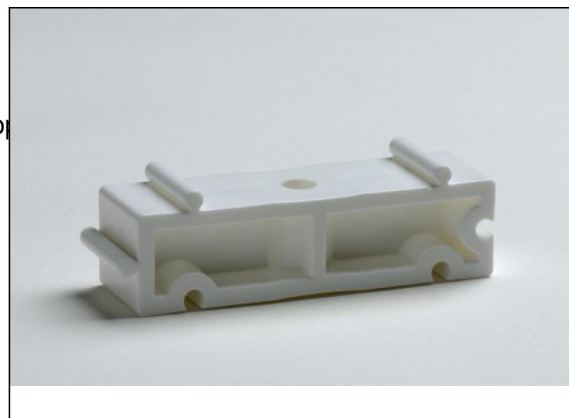
Технология

- Изготавливается литьем под давлением

Детали



WIT525
Хомут для тр
убопровода



Позиции в наличии

| ART.CODE | Maat | d3 | Z1 | Z2 | H | C | E | Verp |
|-----------|------|-----|------|------|----|----|----|----------------|
| WIT524016 | 16 | 5.5 | 14 | 16.5 | 20 | 10 | 16 | 400 (40x10) |
| WIT524020 | 20 | 5.5 | 16.5 | 19 | 20 | 10 | 16 | 400 (40x10) |
| WIT524025 | 25 | 5.5 | 19 | 21.5 | 20 | 10 | 16 | 800 (80x10) |

Van de Lande BV

Lissenveld 1 \ 4941 VK Raamsdonksveer \ The Netherlands \ t +31 (0)162 51 60 00 \ f +31 (0)162 52 14 17 \ sales@vandelande.com
Traderegister Tilburg: 18070844 \ IBAN: NL13 RABO 0143 0035 26 \ BIC: RABONL2U \ VAT: NL 8123.91.755.B01

| ART.CODE | Maat | d3 | Z1 | Z2 | H | C | E | Verp |
|-----------|------|-----|------|------|----|----|----|----------------|
| WIT524032 | 32 | 5.5 | 24 | 26.5 | 20 | 10 | 16 | 600 (60x10) |
| WIT524040 | 40 | 6.5 | 33.5 | 33.5 | 20 | 10 | 22 | 250 (25x10) |
| WIT524050 | 50 | 6.5 | 37 | 37 | 20 | 10 | 22 | 250 (25x10) |
| WIT524063 | 63 | 8.5 | 44.5 | 44.5 | 20 | 10 | 25 | 150 (15x10) |
| WIT524075 | 75 | 8.5 | 52 | 52 | 20 | 10 | 25 | 80 (8x10) |
| WIT524090 | 90 | 8.5 | 64.5 | 64.5 | 20 | 10 | 28 | 100 (10x10) |

Van de Lande BV

Lissenveld 1 \ 4941 VK Raamsdonksveer \ The Netherlands \ t +31 (0)162 51 60 00 \ f +31 (0)162 52 14 17 \ sales@vandelande.com
Traderegister Tilburg: 18070844 \ IBAN: NL13 RABO 0143 0035 26 \ BIC: RABONL2U \ VAT: NL 8123.91.755.B01

All our transactions are subject to the Van de Lande General Terms of Sale. A copy of these can be provided immediately upon your request.